

PROBLEND™

COMMERCIAL SERIES

- warewash
- hand care
- housekeeping
- laundry
- floor care

Professional Cleaning Solutions

ProBlendCommercial.com



Table of Contents

warewash	3
High Temperature Systems	4
Low Temperature Systems	5
Presoaks	6
Pot & Pan	6
Cleaners & Degreasers	7
Floor Cleaners.....	9
Sanitizers & Disinfectants.....	10
Exterior Odor Control.....	10
hand care	11
Antibacterial Soaps.....	12
Lotion Soaps	12
Hand Sanitizers	13
Industrial Hand Cleaners.....	13
Altair Hand Care System	14
housekeeping	15
Bathroom Cleaners	16
All Purpose Cleaners.....	17
Restroom Care.....	19
Glass Cleaners.....	19
Rachael Tolliver RTU.....	20
Galaxy Dispensing System	21
laundry	25
Alkali and Solvent	26
Detergents.....	26
Destainers	28
Sour.....	28
Sour/Softener.....	28
Softeners	29
Sizing.....	29
Pre-Spotters	30
Reclaim.....	31
Eclipse Laundry System.....	32
Orion Laundry System.....	36
floor care	39
Floor Finishes.....	40
Restorers	40
Floor Strippers.....	41
Floor Cleaners.....	41
Carpet Cleaners	42
Carpet Spotters	42
equipment & tools	43
Warewash Equipment.....	44
Hand Care.....	50
Housekeeping Tools.....	51
Floor Care	52

PROBLEND™

COMMERCIAL SERIES

ProBlendCommercial.com



BEYOND CLEAN.

ProBlend is a brand of cleaning solutions that goes BEYOND CLEAN... for organizations that buy it, sanitation professionals that use it, and customers and guests that enjoy the many benefits of cleaner, healthier environments.

Serving hospitality, education, food service, Building Service Contractors (BSCs) and municipalities, ProBlend uniquely offers a total commercial cleaning solutions program for these industries. From high performance cleaning and sanitation to reliable, cost-effective systems and equipment, your authorized ProBlend dealer or service provider can recommend the perfect blend of professional ProBlend products to meet the evolving needs of your business today.



REV:080714



PROBLEND™
COMMERCIAL SERIES



warewash

Convenience. Confidence. Health.

ProBlend's line of complete warewash cleaning solutions removes the worry and hassle from kitchen and facility cleaning and sanitation, offering employees a healthier and safer work environment and guests a remarkably enjoyable dining experience.



Endorsed by EXECUTIVE CHEF SCOTT ROMANO

Recruited by such famed chefs as Wolfgang Puck and Charlie Palmer, Executive Chef Scott Romano has been sought after by many of the world's greatest chefs because of his enormous talent. Currently the Corporate Chef for the prestigious Frisco Gun Club in Dallas, Chef Romano has lent his talents to the James Beard House in New York City, the legendary kitchen Spago in Los Angeles, the highly acclaimed Kitchen 82 on the Upper West Side of Manhattan, and Charlie Palmer's signature restaurant in Dallas where he garnered a four-star review from the Dallas Morning News.

"You'll find ProBlend warewash cleaners and sanitizers in all of my kitchens to keep them healthy and safe."

High Temperature Systems



CRYSTAL
20740
4/1 GAL · 5 GAL

Chlorinated high temperature liquid detergent with high alkalinity and extra destaining properties. It contains polymeric dispersants to work scale free in water with high solids.



SAFE METAL
10966
4/1 GAL · 5 GAL

Low foam liquid metal safe detergent for high temperature dishmachines quickly removes stubborn soils. Its extra chelating ability makes it a powerful cleaner for hard water conditions. Chlorine Free.



ECO SOLID SELECT
DF107
4/8 LB

Solid high temperature dishmachine detergent safely cleans and removes hardened soils from glassware, silverware, china, plastic and soft metals. Effective in all water conditions. DfE Certified.



SOLID FORCE
21195
4/8 LB · 6/8 LB

Premium high temperature solid dishmachine detergent provides excellent cleaning ability, free rinsing and use cost. For use in solid dispensing equipment.



ECO VISION HW
DF102
4/1 GAL · 5 GAL

Specifically designed for hard water applications in high temperature dishmachines. It safely cleans and removes hardened soils from glassware, silverware, china and plastic. Free rinsing. DfE Certified.



SOLID FORCE NP
21198
4/8 LB · 6/8 LB

Non-phosphated premium high temperature solid dishmachine detergent provides excellent cleaning ability, free rinsing and use cost. For use in solid dispensing equipment.



ENCAP DISH
13920
4/10 LB

Powdered dishmachine detergent contains chlorine, chelators and dispersing chemicals, which bonded together offer excellent results and use cost. Encapsulated to provide a closed loop detergent system.



SOLID METAL POWER
21277
4/8 LB

Metal protection high temperature solid dishmachine detergent is gentle and safe for soft metals including aluminum and pewter. Excellent cleaning, free rinsing and use cost. For use in solid dispensing equipment.

Low Temperature Systems



ECO CLARITY RINSE
PB00NYC01AA · 4/1 GAL
PB00NYC01AB · 5 GAL



Specially concentrated rinse additive reduces the surface tension of water and provides rapid draining for a spot free appearance. It also controls foam over a wide range of temperatures. DfE Certified.



LT DETERGENT
18138
4/1 GAL · 5 GAL

Economically formulated, alkaline dishmachine detergent. LT Detergent provides the best results when used in medium to soft water.



RINSE FREE
14409
4/1 GAL · 5 GAL

Economical concentrated liquid rinsing agent contains defoaming and sheeting agents. It accelerates drying time by reducing the surface tension on tableware and aids in defoaming wash tanks.



HW LT DETERGENT
18145
4/1 GAL · 5 GAL

Specifically designed for hard water applications in low temperature commercial dishmachines. HW LT Detergent keeps your dishes clean and sparkling for great customer satisfaction.



SOLID SHEEN
21580
2/5 LB · 4/5 LB

Effective yet economical solid drying agent contains sequestering agents and anti-foamers for hard water applications. It breaks down the surface tension of water so water droplets cannot form.



LT RINSE AID
20733
4/1 GAL · 5 GAL

Economical anti-spotting drying agent and anti-foamer breaks down the surface tension of water on glasses and silverware. The result is sheeting of rinse water and no water spots.



SPARKLE
21945
4/1 GAL · 5 GAL

Premium concentrated liquid drying agent for high temperature dishmachines, using medium to soft water. It contains defoamers, chelating agents and is highly active. Leaves glasses and flatware spotless.



HW LT RINSE
14409
4/1 GAL · 5 GAL

Specifically designed for hard water applications in low temperature commercial dishmachines. HW LT Rinse creates sparkling spot-free results under challenging conditions.



SPARKLE PLUS
14421
4/1 GAL · 5 GAL

Highly concentrated liquid rinsing agent for high temperature dishmachines. It contains defoamers and sheeting agents leaving flatware and glasses spot free.



LT SAN
05205
4/1 GAL · 5 GAL

Concentrated and stabilized 10% sodium hypochlorite solution, blended to sanitize food service glassware, flatware, dishes, and utensils in commercial dishmachines. EPA Registered.



Presoaks



ECO SOLID SILVER

DF108
2/8 LB

Solid presoak is metal safe and gentle on flatware. It breaks up and loosens hardened food soils insuring all food particles are removed. Can also be used to detarnish silverware. DfE Certified.



OXY COMPLETE

14727
2/5 LB

Powdered oxygenated destainer formula effectively removes stains from plasticware, coffee cups, serving utensils, tea urns and cutting boards.



SILVER BRILLIANT

18340
4/1 GAL · 5 GAL

Enhanced performance silver and flatware brightening agent can be used to soak flatware prior to being washed. It keeps tarnish from forming and improves sheeting.



SILVER BURST

26052
2/5 LB

Powdered silver and flatware brightening agent can be used to soak flatware prior to being washed. Keeps tarnish from forming on flatware and improves sheeting.



SOLID SILVER BRITE

21540
2/8 LB · 4/8 LB

Mild alkaline formulation for presoaking and detarnishing silverware. It attacks residual soil on silver and flatware, digesting it and insuring its removal. Works well in all water conditions.

Pot and Pan



BAR GLASS

11428
2/1 GAL · 4/1 GAL

Low foaming manual glassware detergent specifically formulated to rinse freely and prevent water spotting. Loosens dried on soils, including lipstick. Effective in all water conditions. Floral fragrance.



CLEAN PRO POT & PAN

19865
4/1 GAL · 5 GAL · 15 GAL · 30 GAL

Economical, all purpose pot and pan detergent produces thick, rich suds that penetrate and emulsify food soils and grease. Can be used in all water conditions. Baby powder fragrance.



ECO POT & PAN

DF112
4/1 GAL · 5 GAL

High-foaming pot and pan detergent dissolves grease and oil quickly from pots & pans, dishes, glassware and utensils. Effective in all water conditions. Ocean power fragrance. DfE Certified.



EMERALD

17840
4/1 GAL · 5 GAL

High quality phosphate free detergent formulation. Emerald is tough on soils yet gentle to skin, produces long lasting suds and works well in all water conditions. Citrus fragrance.



LF ZIRCON

17835
2/1 GAL · 5 GAL

Low foaming phosphate free detergent for automated soaking systems. It is tough on soils and effective in all water conditions. Citrus fragrance.



SAPPHIRE

21000
6/1 QT · 2/1 GAL
4/1 GAL · 5 GAL

Premium phosphate free pot and pan detergent produces long lasting suds. Sapphire is tough on soils yet gentle to skin. Works well in all water conditions. Dawn® type fragrance. DfE Certified.



SOLID CLEAN

21280
2/5 LB · 4/5 LB

Solid pot and pan detergent formulation is 100% active. Solid Clean is an excellent foamer, quickly cuts grease and tough soils and is mild to skin. Floral fragrance

Cleaners and Degreasers



BLUE CLEAN

14945
2/1 GAL · 4/1 GAL

Concentrated butyl based all purpose cleaner and degreaser. Blue Clean is great for use as a medium-duty cleaning compound. Free rinsing.



CITRA SOL

RD102
2/1 GAL · 4/1 GAL

All purpose cleaner and degreaser for removing fat and petroleum based soils. Bold citrus fragrance.



CLEAN ALL

20400
50 LB

Multi-purpose cleaner for general cleaning as well as a pot & pan detergent. An economical solution for any operation. Safe on all surfaces.



GREASE BEAST

15120
2/1 GAL · 4/1 GAL

Concentrated all purpose cleaner and degreaser contains a natural citrus solvent that gives it its citrus scent. This environmentally friendly cleaner removes both animal fat and petroleum based soils.



HD PRIDE CLEANER

15770
2/1 GAL · 4/1 GAL

Alkaline and butyl solvent based degreaser penetrates and removes the toughest soils quickly and easily. HD Pride Cleaner contains alkalis, sequestrants and wetting agents for powerful heavy duty degreasing.



LAVENDER EXPRESS

16600
2/1 GAL · 4/1 GAL

Boldly fragranced Lavender Express is a special multi-purpose cleaner and degreaser formulated for removing soil, grease and grime from any washable surface.



Cleaners and Degreasers Cont.



ELIMINATOR

18972
6/1 QT • 2/1 GAL • 4/1 GAL

Heavy-duty oven cleaner formulated with a blend of detergents for dissolving heavy soils. It is effective on carbonized buildup, fat, oil and grease found on surfaces where high heat is present.



ELIMINATOR PLUS

27180
6/1 QT • 2/1 GAL • 4/1 GAL

Premium oven cleaner formulated with a blend of high alkaline, solvent based, organic detergents for dissolving heavy soils. It cleans fat, oil and grease from ovens, grills, stoves and hard surfaces.



GREEN OVEN

DF105
6/1 QT • 2/1 GAL • 4/1 GAL

Environmentally preferable oven and grill cleaner. Cleans ovens, grills, fryers, hoods, etc. Loosens and removes baked on carbonized soils including grease, oil, starch and protein. Safe for the environment. DfE Certified.



CARBON TERMINATOR

PB112160002-16LQ • 12/16 OZ
PB1186360003-20AR • 6/20 OZ

Powerful product dissolves carbon buildup from metal surfaces working quickly and easily saving time and labor. Carbon Terminator comes in both aerosol and gel to allow the best possible application usage.



COMBAT

20460
50 LB

Cleans heavily soiled concrete or coated concrete surfaces. Contains alkalis, sequestrants and wetting agents that quickly penetrate soils impregnated in concrete. Intense yellow in color.



CLEAN FREEZE

23330
4/1 GAL

Low foam alkaline cleaner formulated for use in refrigerated and freezer environments. It can be used on a broad range of surfaces and most metals, providing rapid penetration of dirt, grease and protein soils.



ENHANCE

PBOOQUE01AA • 12/14.5 OZ

Aerosol spray. Oil based cleaner brightens, polishes and protects stainless steel by forming a shield that resists watermarks and rust. Also great for aluminum, chrome, Formica®, porcelain and ceramic tile. Lemon fragrance.



GREASE EASE

14710
10/1.5 LB

Concentrated powder alkaline detergent formulation quickly emulsifies fat and grease in deep fryers. It aggressively removes grease and heavy oil based soils from kettle interior and exterior surfaces.



GREASE FREE

10661
4/1 GAL • 5 GAL

Designed to accelerate the bioremediation process, Grease Free controls the grease and odors found in drain lines and grease traps with its bacteria that digests grease and gives off CO2 and water as byproducts. Neutroleum fragrance.



SCALAWAY

21020
4/1 GAL

Concentrated non-foaming liquid lime scale remover. For use in dishmachines and to descale steam tables, stainless steel and nonporous kitchen surfaces not damaged by acidic solutions. Removes rust.

Floor Cleaners



BIO FORCE

11680
2/1 GAL • 4/1 GAL • 5 GAL

Heavy-duty floor cleaner for commercial kitchens where concrete, grout and quarry tile floors make for tough work. Bio Force helps improve traction and as an added bonus, helps control odors. Neutroleum fragrance



EVO BLEND - FLOOR CLEANER

BIO23
30/5 OZ • 4/1 GAL

Everyday use floor cleaner and drain maintainer. Delivers superior floor cleaning, odor control, drain and trap maintenance, environmental benefits and flexibility. Effectively removes the food sources of fruit flies. Fresh fragrance.



FLOOR TOUCH

18570
4/1 GAL • 5 GAL

Neutral multi-purpose cleaner. Cleans oil, grease, grime, dirt, inks, and most other soils. Will not remove or harm floor finishes. Citrus fragrance.



GALAXY-41 ENVIRO MOP

BIO23
2/1 GAL

Everyday use floor cleaner and drain maintainer. Delivers superior floor cleaning, odor control, drain and trap maintenance, environmental benefits and flexibility. Effectively removes the food sources of fruit flies. Fresh fragrance.



QUARRY BLAST

22120
2/1 GAL • 4/1 GAL • 5 GAL

Penetrates and lifts grease and oil from quarry tile, concrete and other hard floor surfaces. Quarry Blast improves traction after the very first use. Regular use creates a safer work environment.



PROBLEND™

MOPLESS FLOOR SYSTEM

Creates a safe and healthy environment for guests and employees. Proven to be effective on all surfaces in the removal of grease, reducing trap pumping, fruit fly eradication and produces a non-slip environment.

Ask your ProBlend Rep today!



Sanitizers and Disinfectants



DD 5000

13546
2/1 GAL (Square & F-Style) • 4/1 GAL

Third compartment sink sanitizer effectively cleans, sanitizes, and disinfects surfaces in hospitals, nursing homes, schools, food handling and processing areas, and institutional kitchens. EPA Registered.



FIT®

PB00HEA02AA • 2/1 GAL

Antibacterial fruit and vegetable wash super concentrated for use only in commercial foodservice establishments. Also used as a 2-in-1 cleaner/degreaser for surfaces and equipment. Citrus fragrance. FDA Compliant.



DSQ 10

13960
2/1 GAL • 4/1 GAL

Third compartment sink sanitizer, disinfectant, fungicide, mildewstat and virucide designed for hospitals, nursing homes, hotels & motels, institutional, industrial, and institutional kitchen use. EPA Registered.



SANI-SPRAY™ KIT

PB00EDW01AB • MASTER KIT

No rinse food contact sanitizer that is as effective as bleach, but safer and cheaper. For use in public eating places, schools, daycares, nursing homes, hospitals and food processing plants. EPA Registered.



Exterior Odor Control



WILD CHERRY ODOR OUT

PB10405 • 2/5 LB

Ready to use granular product designed to control odors in dumpsters and trash containers. Instantly deodorizes malodors. Cherry fragrance.



PROBLEND™
COMMERCIAL SERIES



hand care

Clean. Safe. Healthy.

It's simple. It's universal - Clean, germ-free hands mean healthier living, working and learning environments. The ProBlend Hand Care line offers a variety of effective soaps and hand sanitizers that are easy and convenient to install and refill, and that are excellent choices for schools, health-care, food service, hospitality and janitorial applications.



What is Design for the Environment?

Design for the Environment (DfE) was created by the U.S. EPA to identify products that contain the safest possible ingredients, perform well and are cost effective. They take into consideration the health of people and other living things as well as the health of our water, air and land. They also require data to ensure the product performs well for its intended purpose.

For more information on DfE check out their website: www.epa.gov/DfE



Antibacterial Soaps



ANTIBACTERIAL FOAM

27100
2/1 GAL • 4/1 GAL

This moisturizing foaming hand soap provides a cleaner, better guest experience while promoting a safe, healthy environment. It is economically formulated for facilities with high guest volume. Polynesian Tiare fragrance. FDA Registered.



ANTIBACTERIAL LIQUID SOAP

27110
2/1 GAL • 4/1 GAL

Unique liquid hand soap with a pleasing fragrance works with water to kill germs and promote a high degree of hygiene in facilities. It is gentle on hands, yet removes even the heaviest of soils. Polynesian Tiare fragrance. FDA Registered.

Lotion Soaps



CLEAN & SIMPLE

15485
4/1 GAL

Economical liquid hand and pot soap, formulated for excellent quality and use cost. Rich lather, mild pleasant fragrance and value guarantee absolute satisfaction for guests and facility management alike. Lemon fragrance.



PINK SILK

RD104
4/1 GAL

Luxurious ingredients create rich, creamy lather that moisturizes as well as it cleans. It pampers hands, leaving them soft and smooth, while effectively removing tough soils. Pink with almond fragrance.



CLEAR FOAMING SILK

27235
4/1 GAL

Foaming dye free formula creates rich, creamy lather right from the dispenser. It pampers hands, leaving them soft and smooth, while effectively removing tough soils. Almond fragrance.



WHITE SILK

RD120
4/1 GAL

Luxurious ingredients create rich, creamy lather that moisturizes as well as it cleans. It pampers hands, leaving them soft and smooth, while effectively removing tough soils. White with almond fragrance.



CLEAR SILK

27230
4/1 GAL

Dye free formula with luxurious ingredients create rich, creamy lather that moisturizes as well as it cleans. It pampers hands, leaving them soft and smooth, while effectively removing tough soils. Almond fragrance.

Hand Sanitizers



ALCOHOL HAND SANITIZER GEL

27130
2/64 OZ • 4/64 OZ • 2/1 GAL • 4/1 GAL

Uniquely formulated, all-in-one alcohol based hand sanitizer is highly effective, yet gentle on skin. It removes dangerous microorganisms and bacteria, leaving skin clean and smooth. 70% IPA. Lemon-lime fragrance. FDA Registered.



E3 FOAMING HAND SANITIZER

27120
2/1 GAL • 4/1 GAL

All-in-one sanitizer and cleanser, safely formulated to kill dangerous microorganisms and E.coli bacteria. Pre-lathered for quick, convenient dispensing, which leaves little room for mess. Dye & fragrance free. FDA Registered.

Industrial Hand Cleaners



TRUE GRIT

27195
6/16 OZ • STARTER KIT • 8/2.5 L • 30 GAL

Industrial strength hand cleaner removes embedded soil, grime and grease from hands with or without water. Its soy based solvents and absorbent plant scrubbers leave skin soft and moisturized. Cherry fragrance.



The Next Generation of Skin Care



ProBlend's simple and thoughtfully designed Altair Hand Care System offers efficiency, durability, and a choice of four hygienic refill cartridges that reduce the risk of contamination associated with bulk fill dispensers. Every part of the Altair Hand Care System — formulas, pumps, bottles and dispensers — are rigorously tested and monitored for trouble-free performance.

Altair pumps are designed to withstand thousands of activations, with each pump going through a series of automated robotic tests during the manufacturing process to ensure quality and integrity before sale. The unique lock-out design on each dispenser and cartridge ensures your ProBlend refill business.

Altair Hand Care System is robust, reliable and beautifully simple to operate and service. The durable soap cartridges are sealed and therefore hygienic, delivering the optimum amount of soap, minimizing waste and saving you money.

Features & Benefits:

- Each product is available for either an automatic or manual dispenser
- Delivers the optimal amount of product per pump
- Unique lock out design on dispenser



LUXURY FOAM



PB00VEC01AJ · 3/1200 mL (TOUCHLESS)
PB00VEC01AF · 4/1000 mL (MANUAL)

Dermatologically tested foaming hand soap with moisturizers and natural conditioners. Leaves hands clean and soft. Floral fragrance.



LUXURY LIQUID

PB00VEC01AK · 3/1200 mL (TOUCHLESS)
PB00VEC01AG · 4/1000 mL (MANUAL)

Luxurious ingredients produce a thick, rich hand soap lather. Moisturizers and conditioners leave hands soft and supple. Floral fragrance.



FOAM ANTI-BACTERIAL

PB00VEC01AL · 3/1200 mL (TOUCHLESS)
PB00VEC01AH · 4/1000 mL (MANUAL)

Foaming antibacterial hand soap with a touchless automatic dispenser promotes optimal hygiene. Floral fragranced formula foams to a thick, rich lather. FDA Registered.



INSTANT-HAND SANITIZER

PB00VEC01AM · 3/1200 mL (TOUCHLESS)
PB00VEC01AI · 4/1000 mL (MANUAL)

Alcohol-free foaming hand sanitizer provides antibacterial benefits without water. Hand sanitizer kills germs in an instant and keeps hands healthy and moisturized. Pleasant fragrance. FDA Registered.



housekeeping

Fresh. Sparkling. Clean.

From guest rooms to public restrooms and every room in between, ProBlend housekeeping solutions go far Beyond Clean... They brighten, sanitize, disinfect, deodorize, sparkle, polish, protect and maintain rooms and fixtures from floor to ceiling. For the health and safety of occupants and guests. For the benefit of your organization.



Bathroom Cleaners



ATTENDANT

14062
6/1 QT

Non-corrosive ready to use cleaner for all restroom surfaces including counters, walls, floors, fixtures, basins, tubs, and tile. Removes mold and mildew from porcelain and chrome.



ERASER

12690
6/1 QT

Powerful ready to use cleaner and destainer removes challenging stains including mildew, food stains, and discoloration. Contains chlorine bleach. Floral fragrance.



GREEN CARE OXYGENATED CLEANER

14081
6/1 QT • 4/1 GAL

Concentrated environmentally preferable cleaner, fortified with natural citrus cleaning power and hydrogen peroxide. It attacks stubborn soils and stains on virtually all surfaces not harmed by water. Citrus fragrance.



GREEN CARE OXYGEN POWER RTU

14088
6/1 QT

Environmentally preferable ready to use formula cleans with the natural power of citrus and hydrogen peroxide. This multi-functional cleaner gets rid of stubborn soils on most surfaces not harmed by water. Citrus fragrance.



SPARKLE BATH

12820
12/1 QT • 4/1 GAL

Powerful ready to use formula quickly removes mineral deposits, water stains and soils from restroom surfaces. Its viscous liquid gives it excellent cling-ability on vertical surfaces. Wintergreen fragrance.

All Purpose Cleaners



BIG JOB DEGREASER

18340
2/1 GAL • 4/1 GAL

Environmentally preferable, concentrated heavy-duty degreaser. Removes and emulsifies oil and grease as well as solvent based cleaners. Big Job Degreaser is solvent-free, non-butyl and phosphate free.



CITRUS CLEAN

15120
2/1 GAL • 4/1 GAL

Concentrated all purpose cleaner/degreaser contains d-limonene, a natural citrus solvent. It provides exceptional cleaning performance of both fat and petroleum based soils. Removes adhesive residue. Citrus fragrance.



CREAM CLEAN

PB00NYC01AC • 12/1 QT

Liquid crème cleanser removes unsightly stains and polishes surfaces in one step. Nonabrasive scouring agents safely clean surfaces including porcelain, chrome, plastic, fiberglass, stainless steel, brass, copper, etc. Fresh floral scent.



LEMON Q CLEANER

16760
2/1 GAL • 4/1 GAL

Concentrated cleaner and odor counteractant contains quaternary ammonium infused with lemon fragrance. Use on hard surfaces such as floors, walls, in dumpsters, and other areas where odors can be a problem.



MULTI JOB CLEANER

10790
4/1 GAL

This technologically advanced concentrated formula effectively cleans oil, grease, grime, dirt, inks, and other soils from tile, porcelain, marble, concrete, enamel, metal and other surfaces unaffected by water.



POWER UP DEGREASER

14720
6/1 QT • 2/1 GAL • 4/1 GAL

Concentrated general purpose degreaser has a moderate pH, quickly emulsifies greasy soils and boosts the cleaning action of other detergents. Excellent for floors, walls, and general cleaning.



PRONTO GPC

14920
4/1 GAL

Concentrated butyl based all purpose detergent and degreaser. Provides excellent use cost with effective performance for the removal of soils and grease from hard surfaces.



All Purpose Cleaners Cont.



REJUVINATE

PB00QUE01AB · 12/17 OZ

Aerosol spray. Beeswax and mink oil based polish. Cleans all wood surfaces. Restores color and gloss, eliminates small scratches and blemishes and replaces essential oils in natural or treated wood surfaces. Lemon fragrance.



ENHANCE

PB00QUE01AA · 12/14.5 OZ

Aerosol spray. Oil based cleaner brightens, polishes and protects stainless steel by forming a shield that resists watermarks and rust. Also great for aluminum, chrome, Formica®, porcelain and ceramic tile. Lemon fragrance.



METAL BRITE

22020
6/1 QT · 2/1 GAL

Ready to use mineral oil based stainless steel cleaner and polish removes grease, soils, water stains, fingerprints and tarnish from surfaces. It leaves a brilliant shine on polished metal surfaces. Lemon fragrance.

Restroom Care



CITRUS SPLASH

PB00VEC01AO · 12/2.6 OZ

Odor neutralizer ideal for restrooms, offices, nursing homes, hotels and classrooms. Its complex and long lasting citrus fragrance is a bright burst of citrus fruits. VOC/California CARB compliant.



LINEN WAVE

PB00VEC01AP · 12/2.6 OZ

Odor neutralizer ideal for restrooms, offices, nursing homes, hotels and classrooms. Its complex and long lasting linen fragrance is a gentle breeze of clean linen. VOC/California CARB compliant.



AIR CARE DISPENSER

PB00VEC01AQ · EACH

Odor neutralizer dispenser for restrooms, offices, nursing homes, hotels and classrooms. VOC/California CARB compliant.



URINAL SCREEN

PB00VEC01AN · 12/CASE

Keeps drains and urinals free flowing and combats odor between cleaning visits. Its design texture prevents splash back and anti-slip feature keeps it in place. Urinals smell fresh for up to 30 days. Citrus Mango fragrance.

Glass Cleaners



CLEAR VIEW CONCENTRATE

23040
2/1 GAL · 4/1 GAL

Highly concentrated glass and hard surface cleaner creates a spotless, streak-free shine. In diluted form it can be used for cleaning glass, stainless steel, plastic, vinyl, and tile.



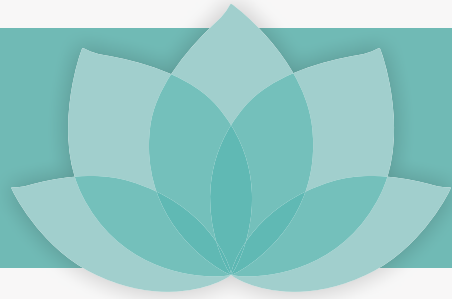
CLEAR VIEW RTU

23140
6/1 QT

Ready to use glass and hard surface cleaner can be used for cleaning glass, stainless steel, plastic, vinyl, and tile. Use for a spotless streak-free shine on most hard surfaces.



RACHAEL TOLLIVER RTU FRAGRANCE COLLECTION



Eliminates odors at the source including smoke, mildew, pet odors and urine.



Meadow Rain
TBD
6/1 QT

Let nature in and brighten your day with the cool and refreshing aroma of lush green meadows after an early morning rain shower.



Modern Bloom
TBD
6/1 QT

Escape to an enchanted garden where exotic night blossoms and shimmering woods are bathed in luminous starlight.



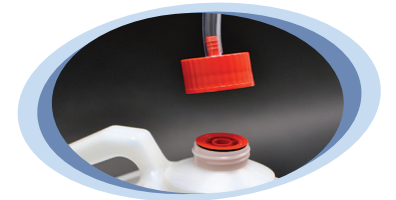
Mango Tango
TBD
6/1 QT

Get your senses dancing with the tropic beat of turquoise waters, coconut palms and sun-sweet mango, pineapple and passion fruit.



Productivity at its Best...
Precise Measuring Plus Powerful Cleaning!

PROBLEND™ GALAXY DISPENSING SYSTEMS



Safe Link Closed Loop Chemical Management System for easy use of chemicals and change-out

ProBlend's GALAXY Dispensing System makes filling bottles, buckets and equipment easier, safer, and more accurate. It is the cleaning industry's comprehensive housekeeping system, designed for hospitality, building service contractors, schools, government facilities and other business who need safe and flexible dilution and dispensing of product.

GALAXY has a sleek design and modern appearance in any housekeeping environment, plus multiple features to enhance productivity and dispensing flexibility. It offers the convenience of one-handed bottle filling and point-of-use remote bucket fill activation, with ultimate flexibility from 1 to 8 products, or multiple dilutions for a single product.



Features & Benefits:

- Consistent measuring for excellent cleaning results and use cost
- Fully color coded equipment with icons for training in all languages
- A range of housekeeping products for every facility area
- Remote fill option for easy filling of buckets and scrubbers when location flexibility is required
- Formulas designed for the environment and green care programs
- Simple one-hand bottle fill offers more flexibility when filling spray bottles
- Super concentrated formulations for efficiency and sustainability
- 1 gallon-per-minute flow control disc improves dispensing accuracy with ultra lean dilutions



GALAXY Dispensing System



GALAXY-10 MEADOW RAIN

27215
2/1 GAL

ODOR COUNTERACTANT. Eliminates odors at the source including smoke, mildew, pet odors and urine. Let nature in and brighten your day with the cool and refreshing aroma of lush green meadows after an early morning rain shower.



GALAXY-11 MODERN BLOOM

27220
2/1 GAL

ODOR COUNTERACTANT. Eliminates odors at the source including smoke, mildew, pet odors and urine. Escape to an enchanted garden where exotic night blossoms and shimmering woods are bathed in luminous starlight.



GALAXY-12 MANGO TANGO

27225
2/1 GAL

ODOR COUNTERACTANT. Eliminates odors at the source including smoke, mildew, pet odors and urine. Get your senses dancing with the tropic beat of turquoise waters, coconut palms and sun-sweet mango, pineapple and passion fruit.



GALAXY-13 CITRUS BREEZE

27200
2/1 GAL

AIR FRESHENER. Neutralizes odors while providing a pleasing and long lasting scent in areas prone to odors. Bring a burst of Spring inside with the bright scent of sun-dried linen, sunny citrus and meadow wildflowers.



GALAXY-14 LAVENDER FRESH

27205
2/1 GAL

AIR FRESHENER. Neutralizes odors while providing a pleasing and long lasting scent in areas prone to odors. Let your cares drift away with the relaxing scent of lavender, rose and orange blossom warmed with vanilla and tranquil woods.



GALAXY-15 POLYNESIAN TIARE

13685
2/1 GAL

AIR FRESHENER. Neutralizes odors while providing a pleasing and long lasting scent in areas prone to odors. Enjoy the cool ocean breezes swirling with sweet flower petals engulfed with teak wood.



GALAXY-20 BATH FORCE

14063
2/1 GAL

BATHROOM. Non-corrosive cleaner for all restroom surfaces including counters, walls, floors, fixtures, basins, tubs, and tile. Removes mold and mildew from porcelain and chrome.



GALAXY-21 ALKALINE DISINFECTANT

TBD
2/1 GAL

BATHROOM. Non-acid bathroom cleaner. Cleans, disinfects and deodorizes in a single step. Concentrated formulation for use in hotels, nursing homes and assisted living facilities. EPA registered.



GALAXY-22 GREEN CARE OXYGEN POWER

14081
2/1 GAL

BATHROOM. Concentrated environmentally preferable cleaner, fortified with natural citrus cleaning power and hydrogen peroxide. It attacks stubborn soils and stains on virtually all surfaces not harmed by water. Citrus fragrance.



GALAXY-23 SCRUB FOAM

11450
2/1 GAL

BATHROOM. Concentrated high-foaming, non-fuming acid detergent designed to remove hard water scale, alkaline detergent build-up, dirt and rust. Renews original brightness on stainless steel and galvanized surfaces.



GALAXY-25 CITRUS TUB & TILE

27210
2/1 GAL

BATHROOM. Concentrated non-corrosive, non-fuming acid cleaner removes hard water scale, alkaline detergent build-up, dirt and rust. Renews original brightness on stainless steel and chrome surfaces. Lemon fragrance.



GALAXY-30 ECO CLEAR

14076
2/1 GAL (was CLEAR VIEW)

GLASS. Streak free cleaning of windows, mirrors, metal, chrome, plastic, fiberglass, plexiglass and other hard surfaces. Cleans tough soils, oily film, fingerprints, smears and smudges. VOC free. DfE Certified.



GALAXY-31 CLEAR VISION

23040
2/1 GAL

GLASS. Highly concentrated glass and hard surface cleaner creates a spotless, streak-free shine. In diluted form it can be used for cleaning glass, stainless steel, plastic, vinyl, and tile.



GALAXY Dispensing System Cont.



GALAXY-40 EASY MOP

18570
2/1 GAL

FLOOR. Easy Mop floor cleaner is solvent free and won't dull high gloss floor finishes. Environmentally friendly and phosphate free, it easily removes dirt, oil and grease, leaving a pleasing citrus fragrance.



GALAXY-41 ENVIRO MOP

BIO23
2/1 GAL

FLOOR. Everyday use floor cleaner and drain maintainer. Delivers superior floor cleaning, odor control, drain and trap maintenance, environmental benefits and flexibility. Effectively removes the food sources of fruit flies. Fresh fragrance.



GALAXY-50 GREEN WAVE

14058
2/1 GAL

ALL PURPOSE. No rinse all purpose cleaner leaves surfaces sparkling clean. Safely lifts soils from floors, walls and most surfaces not harmed by water. Highly concentrated, non-corrosive, non-hazardous and non-flammable. DfE Certified.



GALAXY-51 WAVE PLUS

RD102
2/1 GAL

ALL PURPOSE. All purpose cleaner removes stains and soils from hard surfaces including furniture, countertops and non-skid tub surfaces. Bold citrus fragrance.



GALAXY-52 SURFACE CLEAN

14068
2/1 GAL

ALL PURPOSE. Outstanding non-solvent cleaner degreaser formulated especially for hard surfaces. It easily removes soils by spray and wipe, mop and bucket or automatic floor machine. DfE Certified.



GALAXY-53 LAVENDER PLUS

16600
2/1 GAL

ALL PURPOSE. Unique multi-purpose concentrated cleaner and degreaser, formulated for removing soil, grease and grime from any washable surface. Bold lavender fragrance.



GALAXY-54 NEUTRAL DISINFECTANT

TBD
2/1 GAL

ALL PURPOSE. Disinfectant, cleaner and deodorizer with neutral pH formula. Concentrated formulation for use in hotels, nursing homes and assisted living facilities. EPA registered.



PROBLEND™
COMMERCIAL SERIES



laundry

Bright. Soft. Impressive.

Brighter colors. Whiter whites. Softer towels and sheets. Cleaner uniforms. Whatever your commercial or industrial laundry need, ProBlend can help with high performance solutions and efficient systems - all designed to impress employees and guests and brighten your bottom line.



Alkali and Solvent



BREAK OUT 16900 5 GAL • 15 GAL

Concentrated laundry break contains soil dispersants, suspending agents, alkaline builders and water conditioners. Ideal for use where heavy grease based soils occur. Can be used in all water conditions.



LINEN BOOST 13740 5 GAL

This product provides a boost of power to remove extra heavy oily and greasy soils. Works best as a prewash or use as a detergent additive on medication, food, oil and adhesive soils.

Detergents



DETERGENT PLUS 17005 5 GAL • 15 GAL

Great liquid detergent for oily and greasy soils like lipstick, shoe polish and sun tan lotion. It has a synergistic blend of surfactants plus powerful dispersants to emulsify and suspend soils. Citrus fragrance.



eMICROBRITE™ II 30525 4/1 GAL • 5 GAL

Specially formulated laundry detergent designed to clean and brighten the unique properties of microfiber cleaning products, without the use of chlorine bleach. Dye, fragrance and phosphate free.



ENZYME POWER 16905 4/1 GAL • 5 GAL

Simplify the laundering process by eliminating laundry break and sour steps. Enzyme Power does not require high alkalinity, can be used as a presoak and performs well in lower temperatures. Citrus fragrance.



ES LAUNDRY BRIGHT 23385 5 GAL • 15 GAL

One shot liquid formulation consisting of alkaline builders blended with emulsifiers for commercial liquid laundry systems. Excellent for use on linens in hotels, motels, and nursing homes.



LINEN SUPPLY PLUS 16890 5 GAL • 15 GAL

Super-concentrated laundry detergent contains a combination of anionic and nonionic surfactants and powerful dispersants to emulsify and suspend soils in liquid laundry systems. Leaves no alkaline residue.



REVOLUTION 30535 2/1 GAL

HE, high efficiency, laundry detergent has powerful enzymes and surfactants plus a touch of softener to keep your linen clean and fresh. Truly a one shot product for home and commercial machines. Springtime fragrance.



SUDS ALL 15780 4/1 GAL • 5 GAL

High-sudsing, unbuilt liquid laundry detergent with a moderate pH contains powerful surfactants to emulsify soils during the wash cycle. Best for light to medium soiled laundry in home style machines. Citrus fragrance.



TRIBUTE 30530 2/1 GAL

HE, high efficiency, laundry detergent has powerful surfactants to clean linen, but at the same time treats fabric threads gently while removing soils. Cold and hot water formula. Clean fresh fragrance.



VICTORY 30525 2/1 GAL

HE, high efficiency, laundry detergent has powerful surfactants to remove soils, while at the same time is gentle on skin. Cold and hot water formula. Dye and fragrance free.



WAVE 13775 4/1 GAL • 5 GAL • 15 GAL

Uniquely formulated economical liquid laundry concentrate cleans and brightens linens and other fabrics with optical brighteners. For use in home and commercial machines.



ENZYME CLEAN 14190 4/9 LB • 50 LB

Multifunctional laundry detergent contains color safe bleach and optical brighteners. Use as a presoak for naturally occurring stains Works in low temperatures and will not harm fabrics. Citrus fragrance.



LINEN BUILT 18080 50 LB

Effective powdered built detergent contains surfactants, dispersants, water conditioners and no caustic alkalis. Excellent grease remover. Great for uniforms, bed linens and bar mops. Citrus fragrance.



NEW CLEAN 12540 50 LB

Powdered laundry detergent formulated for soils found in hotels, motels, nursing homes and dormitories. Acceptable for use in HE front loading low foam laundry machines. Citrus fragrance.



NEW CLEAN III 12665 50 LB

Value added powdered laundry detergent used to gently remove soils and leave clean, refreshed linen. Use in institutional and commercial industries, in both front loading and top loading washing machines. Citrus fragrance.



OPTI-BRITE 18840 50 LB

Premium, powdered, all-in-one detergent drastically reduces bleaching with regular use. Its intense optical brightening system produces brilliant colors and bright whites. Effective at all temperatures. Citrus fragrance.



Destainers



CHLOR WHITE

05205
5 GAL • 15 GAL

Maximum strength liquid bleach. Safe on cotton and synthetic fabrics. Can be used as a soil removal aid or as a destaining presoak for blood and protein stains. Not for use on natural silk, wool or nylon fibers.



CLEAR ALL

10260
50 LB

Concentrated 10% powdered chlorine bleach for use where the extra destaining power of active chlorine is desired. Use as a soil removal aid or as a presoak for blood and other difficult protein stains.



OXY BRILLIANT

17150
5 GAL • 15 GAL

Concentrated peroxide bleach blended for safe bleaching of colored fabrics, clothes and textiles. This extremely concentrated oxygen compound is safe for most fabrics and dyes when used as directed.

Sour



SOUR ALL

22630
5 GAL • 15 GAL

Concentrated acid based liquid neutralizer and anti-rust agent specially formulated for commercial laundries.



SOUR EXTRA

16894
5 GAL • 15 GAL

Blended acid based liquid laundry neutralizer with superior iron/rust removing properties prevents and removes red iron spots, brightens yellowing linens and reduces pH to prevent browning when linens are ironed.

Softeners



SOFT TOUCH

17340
5 GAL • 15 GAL

Concentrated fabric softener for commercial and industrial automated laundry dispensing systems. Minimizes wrinkling, increases softness, reduces static electricity and has a pleasant citrus fragrance.



SOFT TOUCH EXCEL

30505
5 GAL • 15 GAL

Concentrated ultra fabric softener leaves linen static free. Its powerful fragrance technology leaves a clean fresh fragrance in all linen.



SOFT TOUCH FREE

30500
2/1 GAL

Concentrated ultra fabric softener with Soft Touch technology. This dye & fragrance free softener reduces static, increases softness and is gentle on skin.



SOFT TOUCH PLUS

27071
5 GAL • 15 GAL

Concentrated fabric softener minimizes wrinkling, increases softness and reduces static electricity. Its controlled viscosity allows for uniform dispensing in commercial and industrial laundry applications. April fresh fragrance.

Sizing



SIZE ALL

16150
5 GAL

High performance blue emulsion elegantly imparts stiffness and body to linens. Size All is ideal for polyester and polyester blends. It also does an excellent job with all other fabrics. Pleasant fragrance.

Sour/Softener



SOUR/SOFT PLUS

16898
5 GAL • 15 GAL

Concentrated, economical, acid based neutralizer and anti-yellowing agent for use in commercial laundries. Sour/Soft Plus reduces the residual alkalinity in clothes and linens. Citrus fragrance.



Pre-Spotters



STAIN PRO B

27185
6/1 QT

Blood stains are easily removed from linens and other fabric by pre-spotting before laundering with high performance Stain Pro B. Professionally formulated to maximize results.



STAIN PRO C

12690
6/1 QT

Excellent chlorine infused pre-spotting agent for use on white linen. Removes a broad range of stains including coffee, wine, fruit juice, mildew and mustard. Linen must be chlorine bleach compatible. Floral fragrance.



STAIN PRO E

14050
6/1 QT

Powerful enzyme formula for use in the pre-spotting process. Removes challenging grass, ink, chocolate, ketchup, gravy and other food color stains. Excellent for pre-spotting cuffs. Kiwi peach fragrance.



STAIN PRO G

15770
6/1 QT

General purpose pre-spotter and stain remover for soiled laundry. Effectively removes mayonnaise and other oily food stains.



STAIN PRO O

22679
6/1 QT

Specifically formulated to tackle the toughest oily stains. With a special blend of solvents, surfactants and boosters, Stain Pro O is designed to remove medicine, oil, lipstick, shoe polish and similar oily stains. Citrus fragrance.



STAIN PRO R

27190
6/1 QT

Gets rust out! Superb, concentrated iron removing formula, designed to pre-spot rust stains on linens.

Reclaim



STAIN PRO 1

27170
10/1.5 LB

Engineered for white linen. Reclaims hard to remove stains missed in pre-spotting procedures or washing process. Stain Pro 1 in your operation will put linen back in service, saving you time and money.



STAIN PRO 2

27175
10/1.5 LB

Formulated specifically for colored linen. Stain Pro 2 reclaims challenging stains missed in the pre-spotting procedure, putting more linens back in service and ultimately saving money and time.



STAIN PRO 3

04950
10/1 LB

Specifically designed for removing rust stains from linen. One-step process added to the wash wheel will reclaim linen missed by pre-spotting. Stain Pro 3 will save linen and money for commercial laundry operations.



PROBLEND™
COMMERCIAL SERIES

Pre-Spotters Chart

Stain Removal Guide			
Stain Pro B	Stain Pro G	Stain Pro C	Stain Pro O
Blood stains are easily removed from linens and other fabric by pre-spotting before laundering with high performance Stain Pro B. Professionally formulated to maximize results.	General purpose pre-spotter and stain remover for soiled laundry. Effectively removes mayonnaise and other oily food stains.	Excellent chlorine infused pre-spotting agent for use on white linen. Removes a broad range of stains including coffee & wine. Linen must be chlorine bleach compatible.	Specifically formulated to tackle the toughest oily stains. Remove medicine, oil, lipstick, shoe polish and similar oily stains.
Stain Pro E	Stain Pro R		
Powerful enzyme formula for use in the pre-spotting process. Removes challenging grass, ink, chocolate, ketchup, gravy and other food color stains. Excellent for pre-spotting cuffs.	Gets rust out! Superb, concentrated iron removing formula, designed to pre-spot rust stains on linens.		

BEYOND CLEAN.



Highly Efficient Dispensing System, Sophisticated Closed Loop System



Safe Link Closed Loop Chemical Management System for easy use of chemicals and change-out

PROBLEND™ ECLIPSE LAUNDRY SYSTEMS

ProBlend's state-of-the-art ECLIPSE equipment has the capability to send production reports to help your laundry run at its most efficient. With the ECLIPSE Laundry System, you are able to use the latest in closed loop system technology along with highly efficient dispensing systems.

The ECLIPSE Laundry System makes dispensing easy, while at the same time it is very sophisticated and works in many applications.



Features & Benefits:

- Easy to use 16x4 character illuminated screen
- Accurate measurement with no wasted chemicals
- 3 manifold outputs to safely filter various chemicals
- Takes loads from 35 to Tunnel
- Fully color coded equipment with icons for training in all languages
- Flexibility with any combination from 1 to 10 pumps
- Formula select can be programmed with wash cycle names
- 1 to 20 programmed linen types to select from
- Directly download laundry operation reports to your apple or android device
- Membrane pump available

ECLIPSE Laundry System



ECLIPSE - AURORA
16900
5 GAL • 15 GAL • 30 GAL

ALKALI. Concentrated laundry break contains soil dispersants, alkaline builders and water conditioners. Ideal for use where heavy grease based soils occur. Can be used in all water conditions.



ECLIPSE - E 2000
13775
5 GAL • 15 GAL • 30 GAL

DETERGENT. Concentrated laundry detergent containing anionic and nonionic surfactants and powerful dispersants to emulsify and suspend soils in liquid laundry systems. Leaves no alkaline residue in clothes.



ECLIPSE - E 3000
30525
5 GAL • 15 GAL • 30 GAL



DETERGENT. HE, high efficiency, laundry detergent has powerful surfactants to remove soils, while at the same time is gentle on skin. Cold and hot water formula. Dye and fragrance free.



ECLIPSE - E 4000
30530
5 GAL • 15 GAL • 30 GAL



DETERGENT. HE, high efficiency, laundry detergent has powerful surfactants to clean linen, but at the same time treats fabric threads gently while removing soils. Cold and hot water formula. Clean fresh fragrance.



ECLIPSE - E 5000
23385
5 GAL • 15 GAL • 30 GAL

DETERGENT. Dual laundry detergent removes soil with the help of powerful surfactants and alkalis, leaving linens feeling soft.



ECLIPSE - E 6000
16905
5 GAL • 15 GAL • 30 GAL

DETERGENT. Enzyme laundry detergent simplifies the laundering process by eliminating laundry break and sour steps. It does not require high alkalinity, can be used as a presoak and performs well in lower temperatures. Citrus fragrance.



ECLIPSE - BRIGHT WHITE
05205
5 GAL • 15 GAL • 30 GAL

DESTAINER. Maximum strength sodium hypochlorite solution. Use as a soil removal aid or destaining presoak for protein stains. Safe on cotton and synthetic fabrics. Not for use on natural silk, wool or nylon fibers.



ECLIPSE - COLOR BRIGHT
17150
5 GAL • 15 GAL • 30 GAL

DESTAINER. Color safe oxygen bleach is a concentrated hydrogen peroxide compound that is safe for most fabrics and dyes when used as directed. It will not cause yellowing.



ECLIPSE Laundry System Cont.



ECLIPSE - SANTEX

TBD
5 GAL • 15 GAL • 30 GAL

SANITIZER. Fabric sanitizer imparts a residual self-sanitizing and bacteriostatic finish. It reduces the bacterial count by 99.9% and kills MRSA. Great for use on bedding, towels and institutional linens.



ECLIPSE - COUNTER-STEP

16894
5 GAL • 15 GAL • 30 GAL

SOUR. Acid neutralizer and anti-rust agent prevents and removes red iron spots, brightens yellowing linens and reduces pH to prevent browning when linens are ironed.



ECLIPSE - LIBERTY

30500
5 GAL • 15 GAL • 30 GAL

SOFTENER. Concentrated ultra fabric softener with Soft Touch technology. This dye & fragrance free softener reduces static, increases softness and is gentle on skin.



ECLIPSE - LUNA SOFT

30505
5 GAL • 15 GAL • 30 GAL

SOFTENER. Concentrated ultra fabric softener with Soft Touch technology. Reduces static electricity and leaves linen smelling fresh with a clean fresh fragrance.



ECLIPSE - SATURN SOFT

27071
5 GAL • 15 GAL • 30 GAL

SOFTENER. Concentrated fabric softener reduces wrinkling, increases softness and reduces static electricity. Its controlled viscosity allows for uniform dispensing. April fresh scent.



ECLIPSE - SOLAR FLARE

30520
5 GAL • 15 GAL • 30 GAL

SOFTENER. Concentrated ultra fabric softener with Soft Touch technology leaves linen smelling fresh with a springtime fragrance.



ECLIPSE - ORBIT S/S

16898
5 GAL • 15 GAL • 30 GAL

SOUR/SOFTENER. Concentrated sour and softener combination eliminates static electricity and removes rust. It reduces the pH in fabric for improved handling, a longer life and safer ironing. Citrus fragrance.



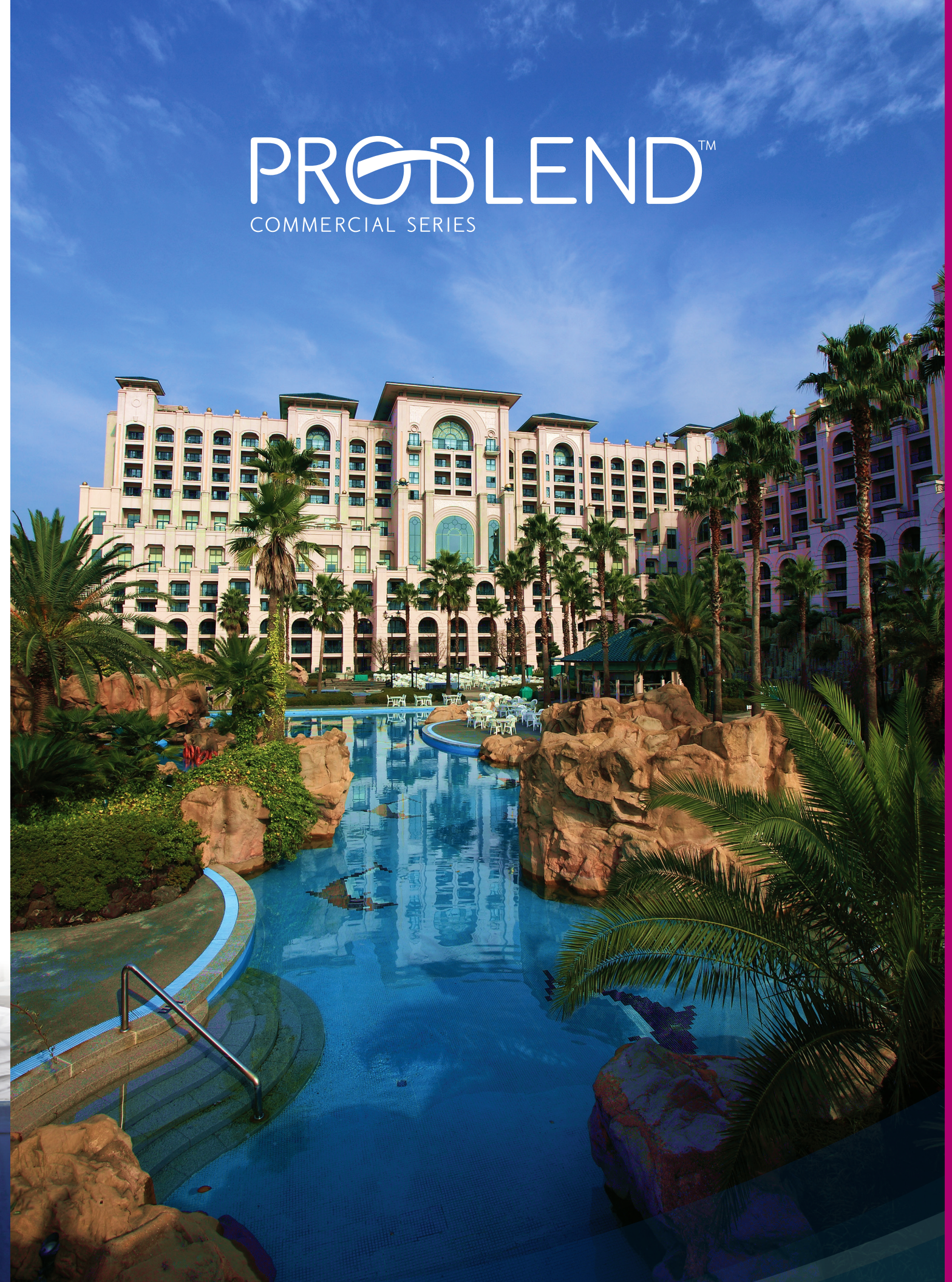
ECLIPSE - ZENITH

16150
5 GAL • 15 GAL • 30 GAL

SIZING. Concentrated blue emulsion imparts stiffness and body to linens. This high performance product is ideal for polyester and polyester blends. It also does an excellent job with all other fabrics. Pleasant fragrance.

PROBLEND™

COMMERCIAL SERIES

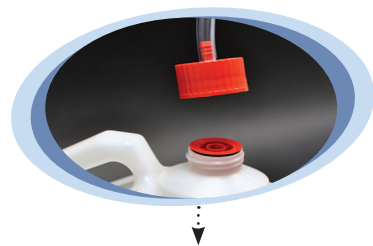


Revolutionary Dispensing System, So Sophisticated It's Simple.

PROBLEND™ ORION LAUNDRY SYSTEMS

ProBlend's state-of-the-art ORION Laundry System is reliable, easy to use, and flexible for almost any commercial or industrial environment. It accurately measures and dispenses selected ORION detergents and processing chemicals into the wash wheel in exact dosages, eliminating the need for manual labor, saving your operation both time and money.

The ORION Laundry System is simple yet sophisticated. It works with tunnel machines, mechanically-, card reader- and PLC-controlled machines, small wash extractors and large intelligent and non-intelligent machines. It's ideal for a broad range of on premise laundry operations.



Safe Link Closed Loop Chemical Management System for easy use of chemicals and change-out



Features & Benefits:

- Easy to use 16x4 character illuminated screen
- Accurate measurement with no wasted chemicals
- 3 manifold outputs to safely filter various chemicals
- Takes loads from 35 to 250 lb
- Flexibility with any combination from 1 to 10 pumps
- Formula select can be programmed with wash cycle names
- 1 to 20 programmed linen types to select from
- Directly download laundry operation reports to your apple or android device



ORION Laundry System



ORION-10 ALKALI

16900
2/1 GAL

ALKALI. Concentrated liquid laundry break is ideal for use where heavy grease based soils occur. Formulated for use in the suds cycle in small to medium on premise laundry systems. For use in all water conditions.



ORION-20 DETERGENT

13775
2/1 GAL

DETERGENT. Concentrated laundry detergent containing anionic and nonionic surfactants and powerful dispersants to emulsify and suspend soils in liquid laundry systems. Leaves no alkaline residue in clothes.



ORION-21 VECTOR

30530
2/1 GAL

DETERGENT. HE, high efficiency, laundry detergent has powerful surfactants to clean linen, but at the same time treats fabric threads gently while removing soils. Cold and hot water formula. Clean fresh fragrance.



ORION-22 TYPHOON

30525
2/1 GAL

DETERGENT. HE, high efficiency, laundry detergent has powerful surfactants to remove soils, while at the same time is gentle on skin. Cold and hot water formula. Dye and fragrance free.



ORION-23 ES-9000

23385
2/1 GAL

DETERGENT. Concentrated laundry detergent with powerful surfactants and alkalis to remove soil without leaving linens feeling rough.



ORION-24 SYNERGY

16905
2/1 GAL

DETERGENT. Enzyme laundry detergent simplifies the laundering process by eliminating laundry break and sour steps. It does not require high alkalinity, can be used as a presoak and performs well in lower temperatures. Citrus fragrance.



ORION-25 RHAPSODY

30535
2/1 GAL

DETERGENT. HE, high efficiency, laundry detergent has powerful enzymes and surfactants plus a touch of softener to keep your linen clean and fresh. Truly a one shot product for home and commercial machines. Springtime fragrance.



ORION-30 CHLOR BRIGHT

05205
2/1 GAL

DESTAINER. Concentrated sodium hypochlorite solution can be used as a soil removal aid or as a destaining presoak for difficult protein stains. Safe on cotton and synthetic fabrics. Not for use on natural silk, wool or nylon fibers.



ORION-31 OXY VIVID

17150
2/1 GAL

DESTAINER. Peroxide bleach for safe bleaching of colored fabrics, clothes, and textiles. This extremely concentrated oxygen compound, is safe for most fabrics and dyes when used as directed. It will not cause yellowing.



ORION Laundry System Cont.



ORION-40 SOUR

16894
2/1 GAL

SOUR. Concentrated acid neutralizer and anti-rust agent for use in commercial laundries. ORION-40 Sour brings clothes and linens to their proper pH for a longer life.



ORION-52 SUNBURST

30520
2/1 GAL

SOFTENER. Concentrated ultra fabric softener with Soft Touch technology leaves linen smelling fresh with a springtime fragrance.



ORION-50 SOFTENER

27071
2/1 GAL

SOFTENER. Concentrated fabric softener for use in commercial and industrial laundries to reduce wrinkling, increase softness and reduce static electricity. Its controlled viscosity allows for uniform dispensing. April fresh scent.



ORION-53 FREEDOM

30500
2/1 GAL

SOFTENER. Concentrated ultra fabric softener with Soft Touch technology. This dye & fragrance free softener reduces static, increases softness and is gentle on skin.



ORION-51 CLEAN & FRESH

30505
2/1 GAL

SOFTENER. Concentrated ultra fabric softener with Soft Touch technology. Reduces static electricity and leaves linen smelling fresh with a clean fresh fragrance.



ORION-60 SOUR/SOFT

16898
2/1 GAL

SOUR/SOFTENER. Concentrated sour and softener combination eliminates static electricity, improves handling, removes rust and reduces the pH in fabric for a natural feel, while providing a longer life and safer ironing. Citrus fragrance.



PROBLEND™
COMMERCIAL SERIES

floor care

Durable. Resilient. Efficient.

Revitalize and reinvigorate your flooring with ProBlend's high performance, resilient floor care products. From tile to wood to carpet, our total floor care program is designed to maintain, enhance and beautify the floors in your buildings, with reduced labor and material costs.



Floor Finishes



GREEN CARE FLOOR FINISH

14041
4/1 GAL • 5 GAL

Environmentally preferable floor finish contains no zinc or other heavy metals. Provides a long lasting high gloss appearance and can be used with most maintenance programs and floor types.



LTS ULTRA FLOOR FINISH 22

14478
4/1 GAL • 5 GAL

Superior polymer floor finish and sealer for virtually any floor maintenance program. This medium solids finish achieves a wet look high gloss shine that is long lasting and restores beautifully.



LTS FLOOR FINISH 18

14475
4/1 GAL • 5 GAL

Specialized polymer floor finish and sealer for all floors and floor maintenance programs. Provides a beautiful rich wet look gloss, extended wear properties and an economical long lasting shine.



LTS ULTRA FLOOR FINISH 25

14481
4/1 GAL • 5 GAL

The ultimate performance floor finish and sealer for all resilient and terrazzo floors and programs. This high solids finish provides a hard, high gloss and long lasting shine. Easy to apply and dries quickly.

Restorers



FLOOR RESTORE

20700
6/1 QT

Mop-on floor finish restorer for high speed burnishing programs or a spray buff compound in traditional spray buffing procedures. Extends the time between stripping and refinishing to reduce time and labor expense.



Floor Strippers



DEEP STRIP

27150
6/1 QT

Super concentrated floor stripper removes all types of water based finishes and sealers used on resilient and terrazzo flooring. Ideal for floors that have been repeatedly high speed buffed and propane burnished.



GREEN CARE FLOOR STRIPPER

14098
4/1 GAL • 5 GAL

Environmentally preferable low odor floor stripper contains no butyl. Fast acting, it dissolves multiple coats of floor seals and finishes. Use where high solvent solutions are not recommended.



ONCE OVER HD STRIPPER

22875
4/1 GAL • 5 GAL

Low foaming heavy-duty stripper effectively lifts and emulsifies floor finishes, seals, and other fortified coatings from floor surfaces. Excellent for use in automatic scrubbers.

Floor Cleaners



DUST MAGNET

11980
4/1 GAL • 5 GAL

Ready to use solution enhances the appearance and prolongs the life of floor finish while reducing wear and abrasion from sand and soil. Safe for use on most hard surfaces including furniture and walls.



EASY MOP

18570
4/1 GAL • 5 GAL

Neutral multi-purpose floor cleaner. Easily cleans oil, grease, grime, dirt, inks, and most other soils from floor surfaces without removing or harming finishes. Citrus fragrance.



STONE CLEAN

22120
4/1 GAL

Stone Clean safely cleans stone surfaces often found in kitchen, hotel, and office building environments. Cleans, restores and protects any sealed stone surface.



Carpet Cleaners



EXTRACT ALL

14050
4/1 GAL

Exceptional extraction cleaner formulated with enzymes and state of the art surfactants. Brings carpet fibers back to life and leaves no sticky residue to attract soil to carpet. Kiwi peach fragrance.



LOW SUDS II

04085
4/1 GAL

Concentrated silicone emulsion additive designed to control foam in most aqueous systems. The functional properties are especially developed to prevent and eliminate excessive foam.

Carpet Spotters



ENZYME SPOTTER

16905
6/1 QT · 4/1 GAL

Highly effective ready to use carpet spotter uses the power of enzymes and surfactants to break down the source of spots, stains and odors, leaving the carpet clean and fresh. Kiwi peach fragrance.



PROBLEND™
COMMERCIAL SERIES

equipment & tools

Reliable. Flexible. Ownable.

ProBlend's line of durable, reliable cleaning machinery is designed to meet the needs of your business today and tomorrow. Financing programs include purchase, lease or rent to own, with flexible, competitive terms. Your local ProBlend representative can help you determine the equipment and program that's right for you.



Warewash Equipment



ADC-66 CONVEYOR

- High or low temperature dishmachine
- Rated for dual sanitizing
- 244 racks per hour with as little as .49 gallons per load
- Deep "V" scrap tank
- Auto fill / auto start/shut-off
- Safety shut-off scrap pump with overflow scraping feature
- Patented water control
- Water curtain for final rinse
- 3 HP water pump, 1.5 HP scrap pump



ADC-44 CONVEYOR

- Available in high temp or low temp
- High capacity, energy saving, self-purging stage conveyor
- 244 racks per hour with as little as .49 gallons per load
- High capacity heaters
- Wide opening access doors with safety interlock
- 3 HP wash pump with dual rinsing system
- Heavy stainless steel construction



5AG-S

- Double duty, high capacity dishmachine
- Wash sheet pans horizontally with optional pan rack
- 74 racks per hour with 1.6 gallons per rack
- Great door clearance at 20-1/2"
- Top mount controls with auto start
- Stainless Steel air gap
- Quick release spray arms
- Two quick service 1-1/2 HP pumps
- Delime switch in control panel



5-CD CORNER DOUBLE 2

- Double duty dishmachine fits into the corner of dishwashing area
- Automatic chemical dispensing ensures consistent use of chemicals
- 74 racks per hour / 90 second complete time cycle
- Stainless steel air gap
- Quick release spray arms
- Built-in scrap accumulator
- 1-1/2 HP wash/rinse pump
- Delime switch in control panel



AF-3D-S

- Saves time and money by reducing labor
- Great door clearance of 20.5"
- Quick service 1-1/2 HP pump
- Quick release spray arm removal for ease of cleaning
- Stainless steel air gap fill eliminates need for check valves and vacuum breakers
- Run indicator light
- Available with solid chemical dispensing
- Also available in corner model AFC 3D S



HT-25W BOOSTER

- Wash, rinse, and sanitize in just 45 seconds
- Powerful 3 HP wash pump
- Approved dual sanitizer - same machine serves as either High or Low Temp
- Available with either 45 or 60 second time cycle
- Patented self cleaning spray system
- Low .85 gallons water usage per load
- Two stage SS drain filter eliminates clogged pumps
- Built-in scrap accumulator keeps wash tank clean
- Patented captive spray arm end caps - no parts to lose
- Configured for corner or inline - installs without conversion
- Also available in model HT 25 1 High Temp Sanitizer

Warewash Equipment Cont.



AFB BAKERY

- Ideal for tall wares like sheet pans, bakery trays and pots & pans
- Great results for glassware, flatware and place settings
- 90, 120, or 150 second time cycle (with pre-rinse/wash/rinse)
- High pressure, high volume, 1.5 HP pump
- Built-in chemical dispensing
- 27-1/2" door opening with safety interlock
- Low water use, high speed operation



ET-AF

- Multi-use under counter dishwasher
- Freestanding complete warewashing center in 48" of space
- 1.5 HP wash and rinse pump
- Prime switches
- Automatic chemical feed
- 90 second complete time cycle
- Hinged mounted panel for easy service access



K-64

- 64" Multiple Tank
- 14" upper & 15" lower separation between wash and rinse avoids splashing of soiled water onto sanitized ware.
- Capacity 284 racks per hour / 7100 dishes per hour
- Water consumption 0.37 gallons per rack (105 gal./hour)
- Fully automatic including auto fill and auto start. Wash, recirculating rinse & final rinse are activated only when a rack is in place.
- 2 powerful 3 HP wash pumps
- 2 clearance height options (standard 18" or tall hood 26")
- Internal or External booster heater options (steam/electric)



K-54

- 54" Single tank
- 21" upper & 22" lower separation between wash and rinse avoids splashing of soiled water onto sanitized ware.
- Capacity 239 racks per hour / 5975 dishes per hour
- Water consumption 0.43 gallons per rack (102 gal./hour)
- Fully automatic including auto fill and auto start. Wash & final rinse are activated only when a rack is in place.
- Powerful 3 HP wash pump
- 2 clearance height options (standard 18" or tall hood 26")
- Internal or External booster heater options (steam/electric)



K-66

- 44" Single tank + 22" Prewash
- 16" upper & 17" lower separation between wash and rinse avoids splashing of soiled water onto sanitized ware.
- Capacity 239 racks per hour
- Water consumption 0.43 gallons per rack
- Fully automatic including auto fill and auto start. Prewash, wash & final rinse are activated only when a rack is in place.
- Powerful 3 HP wash pump
- 2 clearance height options (standard 18" or tall hood 26")
- Internal or External booster heater options (steam/electric)



K-44

- 44" Single tank
- 16" upper & 17" lower separation between wash and rinse avoids splashing of soiled water onto sanitized ware.
- Capacity 239 racks per hour / 5975 dishes per hour
- Water consumption 0.43 gallons per rack (102 gal./hour)
- Fully automatic including auto fill and auto start. Wash & final rinse are activated only when a rack is in place.
- Powerful 3 HP wash pump
- 2 clearance height options (standard 18" or tall hood 26")
- Internal or External booster heater options (steam/electric)

Warewash Equipment Cont.



DV 200.2

- Holds two 20" X 20" racks per cycle.
- Field-convertible for use in either straight-through or corner applications
- Capacity 108 racks per hour / 2700 dishes per hour
- Water consumption 1.07 gallons per rack (115.6 gal./hour)
- Fully automatic including auto fill, auto start & auto reset
- 2 X 1 HP wash pumps
- Easily accessible detergent and rinse aid ports for fast and easy chemical dispenser installation
- Built-in booster heater with power rinse pump



KUBE CS 70

- ENERGY STAR Qualified
- Field-convertible for use in either straight-through or corner applications
- Capacity 40 racks per hour (50 racks per hour with user-selectable 72 second cycle)
- Water consumption 1.08 gallons per rack
- Fully automatic including auto fill, auto start & auto drain
- 3/4 HP stainless steel self-draining wash/rinse pump
- Patent-pending Temp Safe feature ensures every cycle is at the correct temperature
- De-lime cycle automatically fills, delimes, drains & rinses



DV 80.2

- ENERGY STAR Qualified
- Field-convertible for use in either straight-through or corner applications
- Capacity 61 racks per hour / 1525 dishes per hour
- Water consumption 0.74 gallons per rack (45.1 gal./hour)
- Fully automatic including auto fill, auto start & auto reset
- 1 HP wash pump
- Easily accessible detergent and rinse aid ports for fast and easy chemical dispenser installation
- Built-in booster heater with power rinse pump



DV 120.2

- Variotronic™ operation - Preset cycles have different wash pressures and cycle times.
- Field-convertible for use in either straight-through or corner applications
- Capacity up to 54 racks per hour / 1350 dishes per hour
- Water consumption 1.13 gallons per rack (61 gal./hour)
- Fully automatic including auto fill, auto start & auto reset
- Powerful 2 HP wash pump
- Easily accessible detergent and rinse aid ports for fast and easy chemical dispenser installation
- Built-in booster heater with power rinse pump



DV 120.2T

- Tall hood - 27" clearance height
- Variotronic™ operation - Preset cycles have different wash pressures and cycle times.
- Field-convertible for use in either straight-through or corner applications
- Capacity up to 52 racks per hour / 1300 dishes per hour
- Water consumption 1.13 gallons per rack (58.8 gal./hour)
- Fully automatic including auto fill, auto start & auto reset
- Powerful 2 HP wash pump
- Easily accessible detergent and rinse aid ports for fast and easy chemical dispenser installation



FV 130.2

- NSF-rated as both a pot & pan washer and as a dishwasher
- Oscillating wash arms for complete ware coverage
- Wheeled, roll-out wire basket (31.5" X 26.5") with removable sheet pan insert
- Capacity up to 20 cycles per hour / up to 11 sheet pans
- Water consumption 2.37 gallons per cycle (47.4 gal./hour)
- Fully automatic including auto fill, auto start & auto reset
- Powerful 3.5 HP wash pump
- Built-in booster heater with power rinse pump

Warewash Equipment Cont.



FV 40.2

- ENERGY STAR Qualified
- Undercounter dishmachine combines labor saving technology with super efficient performance
- Comes with 1 peg rack & 1 combination rack
- Variable programmed time cycles - 95, 150 & 210 seconds
- Capacity up to 37 racks per hour / 925 dishes per hour
- Water consumption 0.66 gallons per rack (24.4 gal./hour)
- Fully automatic including auto fill, auto start & auto reset
- 3/4 HP wash pump
- Built-in booster heater with power rinse pump

Housekeeping Tools

MICROFIBER CLOTH

16 X 16 300 gram weight microfiber cloth. Comes in green, red, blue, yellow and orange colors.



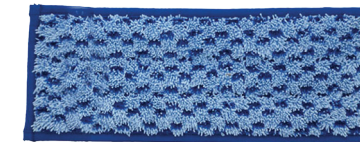
MICROFIBER DUSTER

Flexible duster with 12 inch handle and Wave microfiber sleeve. Sleeve has 2 in long strands to grab and lock dust. Green and white in color.



MICROFIBER SCRUB MOP

18 inch microfiber mop pad with pocket backing. Its short loop microfiber and poly-microfiber square block scrubbers make quick work of tough messes. Color coded tabs for easy selection.



Hand Care

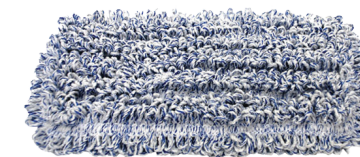


BULK SOAP DISPENSER

- Liquid and foam dispenser
- Keeps hands clean and void of germs
- Suitable for restaurant, hospital or school use
- Comes in both black and white

WAVE MOP

10 X 5 inch microfiber mop pad made with wave material and hook and loop backing. For use with trowel and wall wash frames. Comes in blue and red colors.



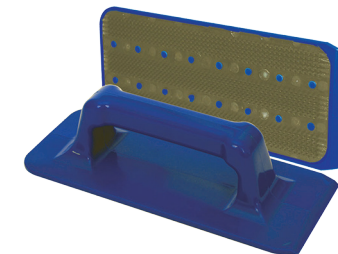
WASH WALL FRAME

9 X 4 inch mop frame with swivel. Hook and loop backing. Blue in color.



TROWEL

9 X 4 inch hand trowel with handle and scrapper edge. Hook and loop backing. Blue in color.



MOP HANDLE

Aluminum telescopic mop handle with gray grip, 26.5 to 48 inches in length. Fits pocket, tab, hook wall wash and MFlex frames.





PUMP-UP FOAMER

DEMA's 900-2PU pump-up foaming dispenser provides spot cleaning and sanitation solutions for the industrial and institutional markets. Patented dual tube technology draws the chemical and air from the tank into separate tubes creating thick foam when mixed at the trigger operated foam wand. Flow in the air tube is controlled by a needle valve giving an operator the ability to control foam consistency.



MICRO SCRUBBER

Kärcher's compact BR 30/4 C scrubber provides a far more efficient and hygienic alternative to manual mopping and scrubbing. Ideal for use on hard floors and tile, the BR 30/4 C has been engineered to be easy to transport and even easier to use and is perfect for use in institutions, restaurants, schools, stores and even homes to maintain the appearance of floors and keep your premises sanitary.



ADVANCED SCRUBBER

Kärcher's BR 40/10 C Adv scrubber/dryer thoroughly deep cleans all your hard floor surfaces then leaves them perfectly dry, safe and hygienic. This compact scrubber is engineered to be easy to transport and even easier to use with snap on wheels that conveniently stow on the operating handle. Ideal for use on hard floors and tile, the BR 40/10 C is perfect for use in institutions, restaurants, schools, stores and even homes to maintain the appearance of floors and keep your premises sanitary.



makes a difference



CLASS HD PRESSURE WASHER

Kärcher's compact high pressure cleaners feature a slim, space-saving design, low weight and high cleaning efficiency which makes them ideal for fast and thorough cleaning jobs around the farm, in the workshop, for company machinery and fleets. All Kärcher compact models have a number of outstanding features in common: rugged 3-piston axial pumps for long service life; patented anti-twist system (AVS) for easy and safe operation; and Kärcher's automatic pressure-controlled shutdown for low energy consumption and extended service life. Models are ETL safety certified to CSA and UL standards.



COMMERCIAL STEAMER

The DE 4002 Commercial Steamer provides unparalleled chemical free cleaning and sanitizing of even the most difficult surfaces and items. Utilizing Kärcher's unique two-tank system that allows for continuous use and water replenishment, the DE 4002 can produce approximately 1,585 gallons (6,000 liters) of steam from its boiler capacity of only 1.2 gallons (4.6 liters) with a run time of up to 5 hours! The DE 4002 not only removes the most difficult soils from nearly any surface but it can be combined with a wide variety of accessories for other tasks such as stripping wallpaper, window cleaning, steam cleaning clothes and upholstery and chemical free cleaning of ovens and grills. The DE 4002 is ideal for use in schools, institutions, hotels, restaurants and building restoration.



PROBLENDTM
COMMERCIAL SERIES

BEYOND CLEAN.

Proud Member of the ProBlend Family of Products